

Smart Gardening Learning Centers



A Model Site Plan



Background

- Approximately 12 million tons of solid waste is disposed of in landfills within the Los Angeles County each year.
- Under the California Integrated Waste Management Act of 1989 (AB 939), the County is required to divert 50 percent of the solid waste it generates away from disposal into landfills.
- To meet this mandate the County established the Smart Gardening Program was developed in 1991 among other recycling and waste reduction programs administered by Public Works.



Smart Gardening Program

- The Countywide Smart Gardening Program teaches residents techniques to create and maintain a healthy, beautiful, and drought-tolerant yard and garden.
- The Program provides FREE workshops with hands-on demonstrations covering backyard composting, worm composting, grass recycling, water-wise gardening, and fire-wise gardening.
- These Smart Gardening techniques can help residents save time and money, conserve water, reduce waste going to landfills, and help preserve the environment.



Smart Learning Center

@ South Coast Botanical Gardens

Designing a Smart Gardening Learning Center - a Model Site Plan

Design Concept

An Outdoor classroom which includes;

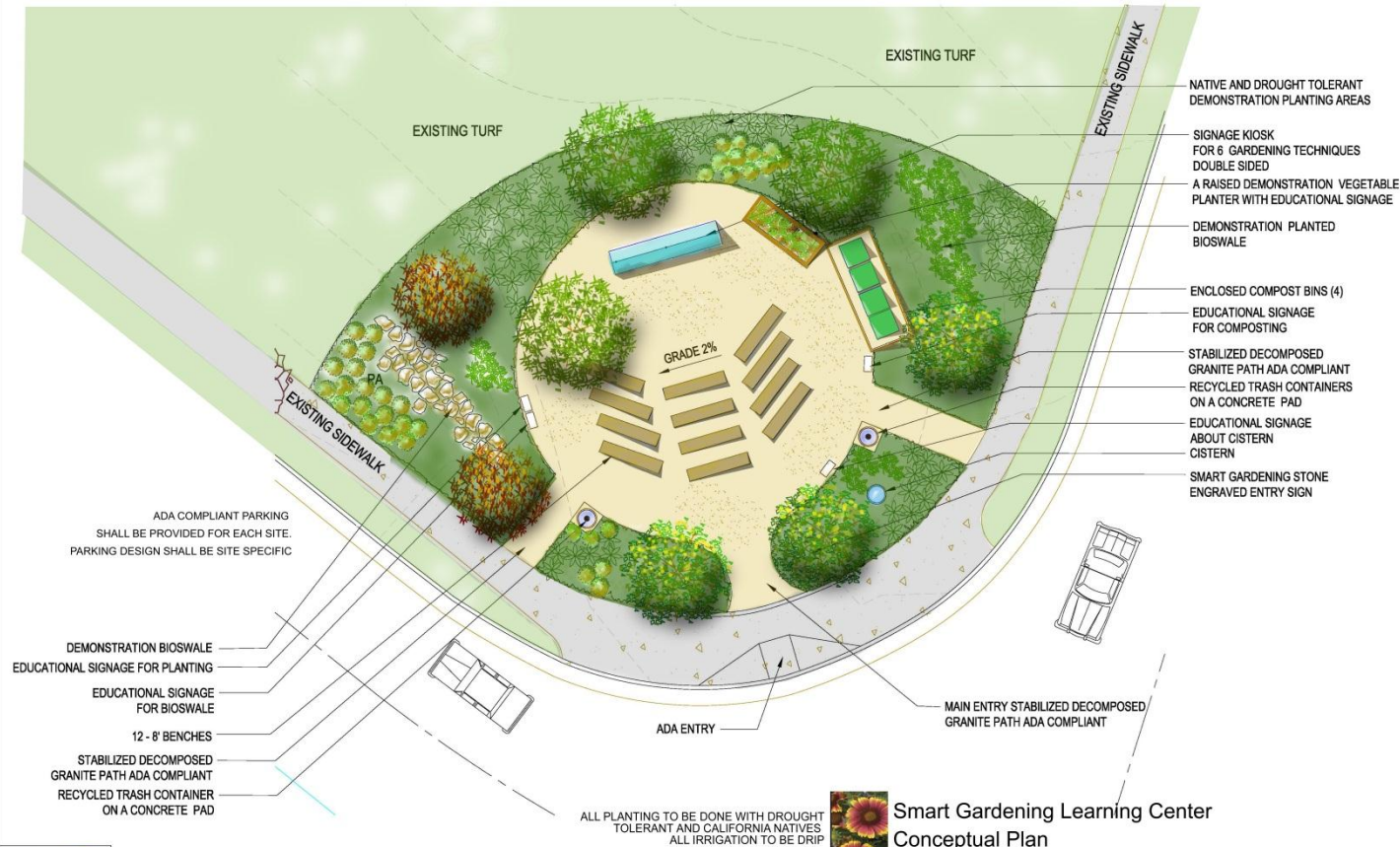
- ✓ LID Stormwater management elements.
- ✓ Recycling and composting elements.
- ✓ Site lighting and irrigation powered by solar energy.
- ✓ Demonstration gardens featuring non-invasive drought tolerant plants and California native plant material.
- ✓ Water-wise gardening: planting designs using “hydrozones (grouping plants with similar water needs).

Interpretive educational signage includes information about;

- ✓ LID Stormwater management techniques.
- ✓ The use of site amenities utilizing recycled materials.
- ✓ The benefits of using drought tolerant and California natives plants.
- ✓ Options in alternative energy use.
- ✓ Building and application of a residential cisterns, raised planters, and bio-swales.
- ✓ The benefits of composting, and recycling.

Model Site Plan

SMART GARDENING LEARNING CENTERS



Smart Gardening Learning Center
Conceptual Plan



COUNTY OF LOS ANGELES DEPT. OF
PARKS AND RECREATION DEVELOPMENT DIVISION
510 S. VERMONT AVE. LOS ANGELES, CA 90020

The Model Site Plan

Site amenities include;

Benches or amphitheater seating area for 48 people

Kiosk with 6 informational signs of Smart Gardening techniques which include;

- Waterwise Gardening
- Backyard Composting
- Worm Composting
- Fire Wise Gardening
- Grass Recycling
- Smart Gardening

Enclosure for 4 composting bins and composting bins (provided by Public Works)

Drip irrigation with a solar powered controller

Recycling bins for beverage containers

Educational signage for;

- The Recycling Process
- Drought Tolerant Plant California Native Material
- Raise Vegetable Planter
- Bio-swale
- Cistern
- Composting
- Alternative energy sources

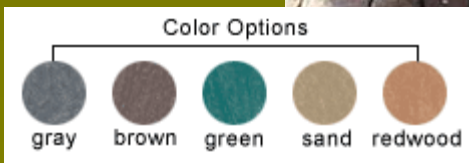
Recycling and Recycled Site Amenities



Recycled 8' benches

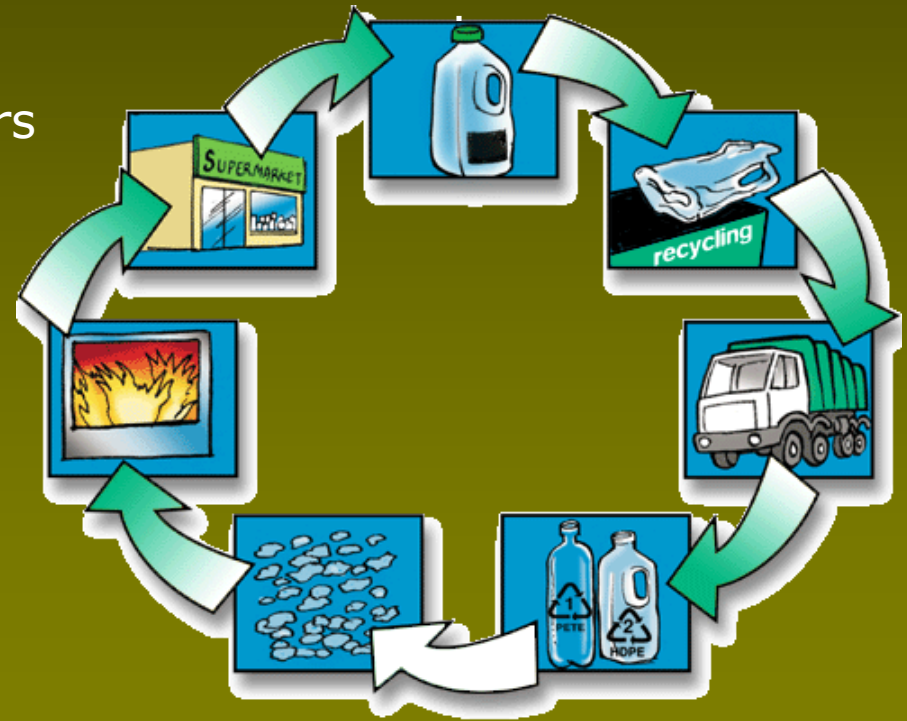


Recycled trash containers



Educational signage includes:

The recycling process



Drought Tolerant and California Native Gardens



Educational signage includes:

Benefits of drought tolerant and California native plant material.

Gardening techniques.

Name of plant material used.



golden-yeow



succulent lupine



monkeyflower



bush sunflower



three-square, bulrush, and others



deer weed

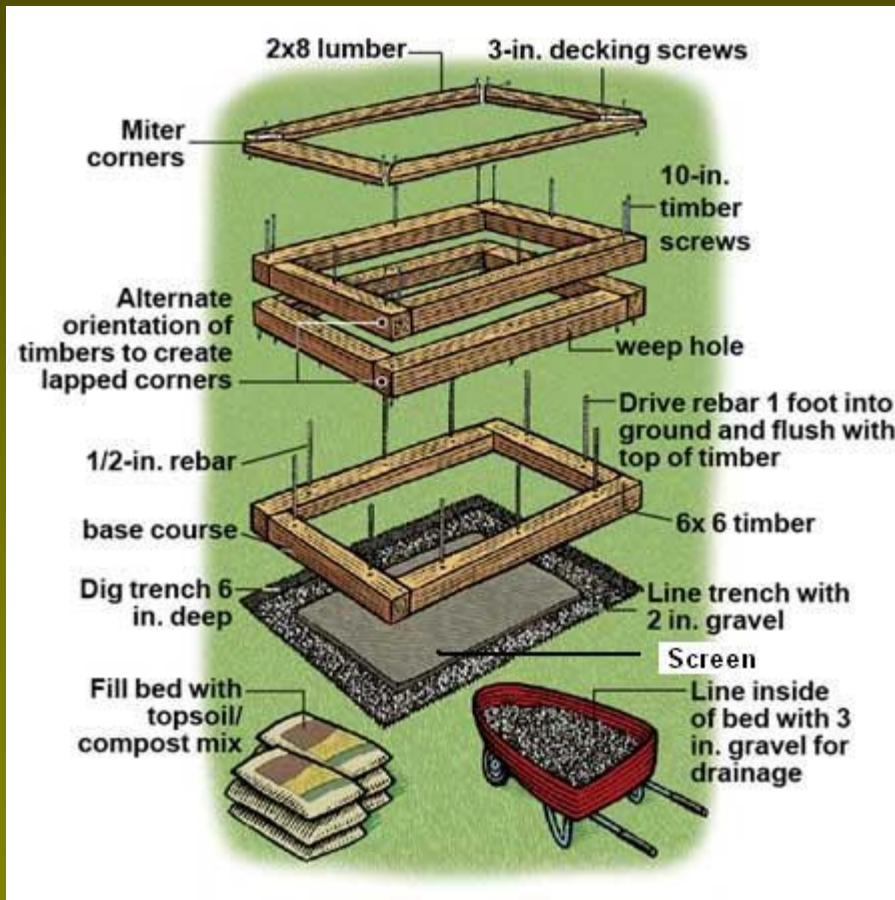
Raised Vegetable Planter

Educational signage includes:

How to build a raised planter.

How to create and maintain a vegetable garden.

Easy to grow vegetables.



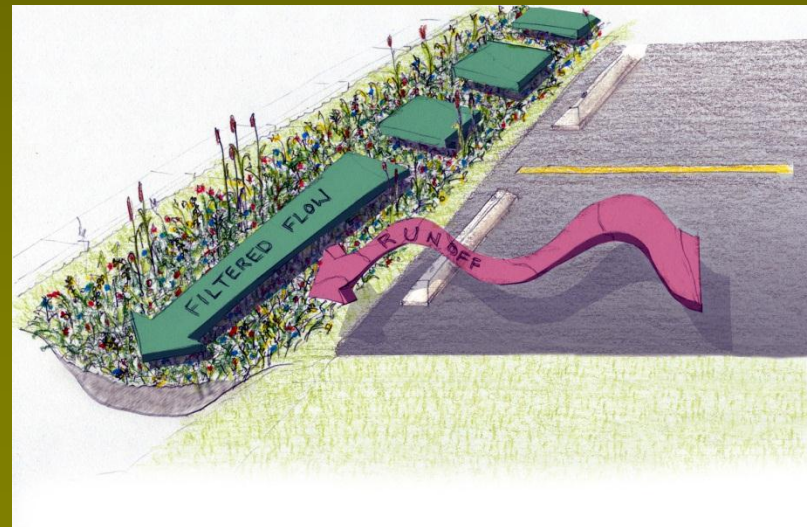
Bio-Swales

Educational Signage to Include the Following Information:

How to build and plant a Bio-swale

How Bio-Swales help keep pollutants out of our rivers, streams and beaches (LID stormwater management).

How Bio-Swales recharge our ground water.

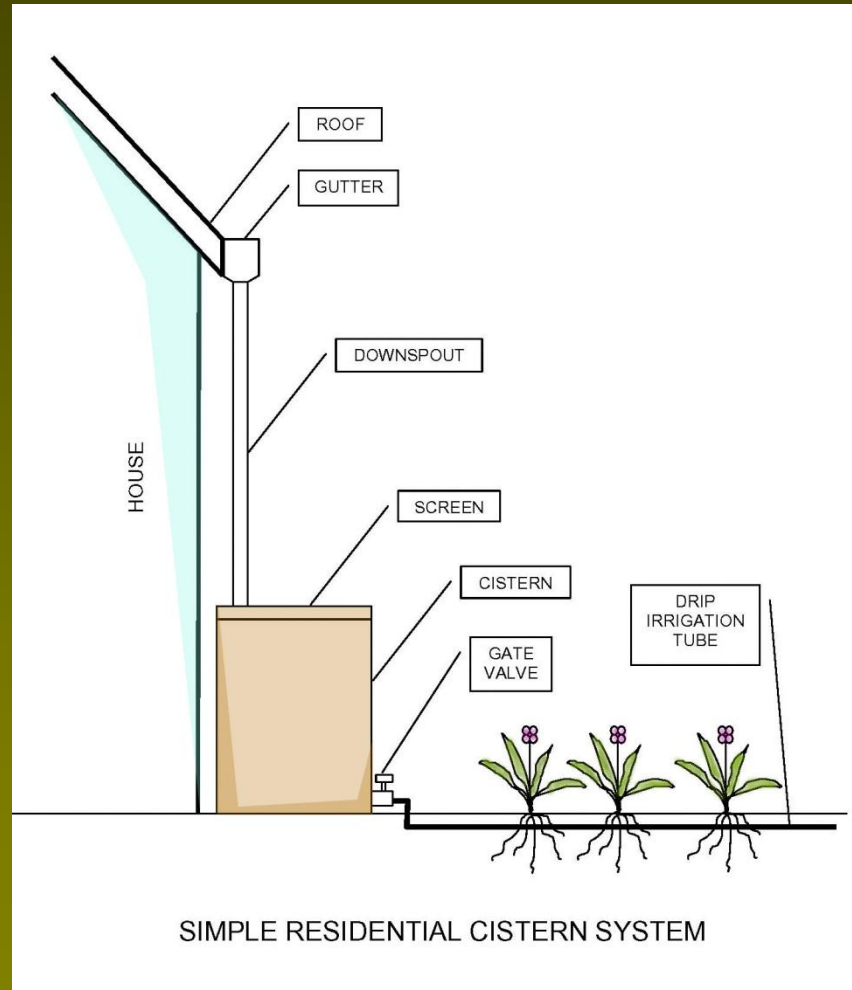


Cisterns

Commercial Rain Barrel



Homemade Rain Barrel



Educational Signage to Include the Following Information:

How to build a cistern

How cisterns contribute to LID stormwater management.

Using captured water for irrigation.

Composting Bins



Educational signage includes:

How composting works.

Backyard composting methods.

Materials you can compost.

How to build a composter.

Composters:



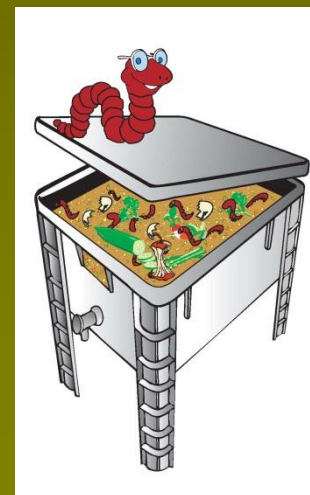
'Garden Gourmet'



'The Earth Machine'



Traditional Compost Bin



Worm
composting

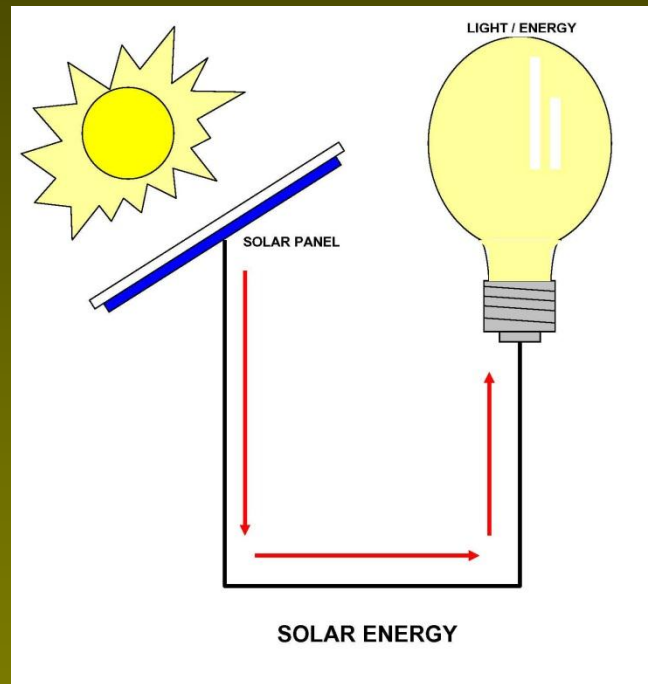
Alternative Energy Sources



Solar
Park
Lighting



Solar Irrigation
Controller



Educational signage
includes:

Options in alternative
energy.

Solar Lighting/Energy

Solar Heating

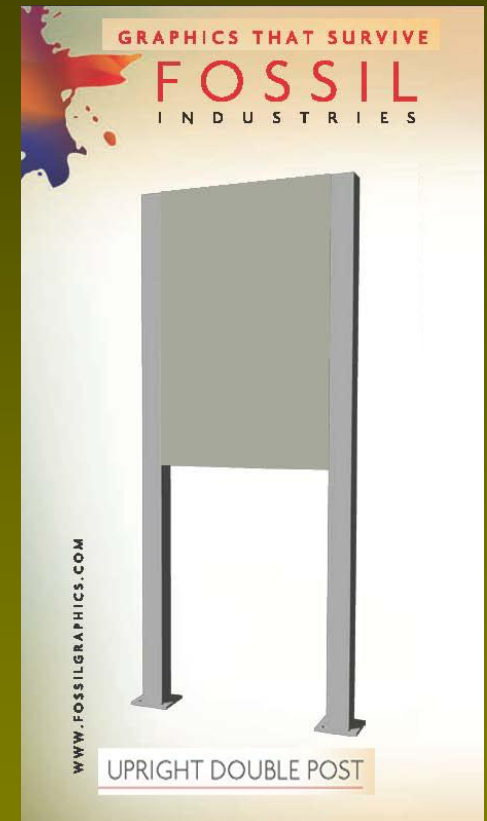
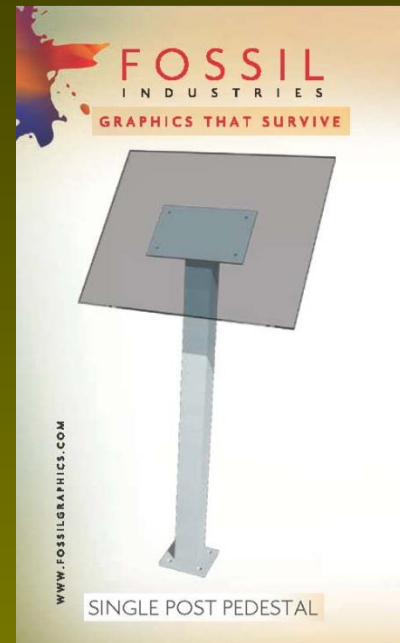
Wind Energy

How the sun's rays are
captured and converted
to energy.

Signage



Entry Signage

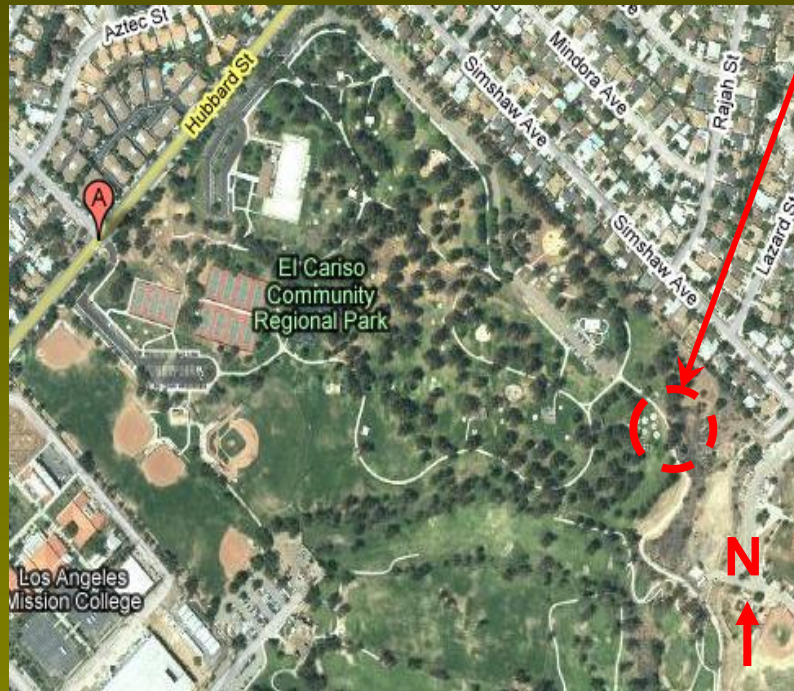


Wayfinding Signage

Educational Signage

Proposed New Site

Cariso Community
Regional Park, Sylmar



Site Constraints to Consider:

ADA compliant pathway from existing ADA parking

The Los Angeles County Smart Gardening Program

Elevating the quality of life by teaching sustainable design, materials and techniques.

